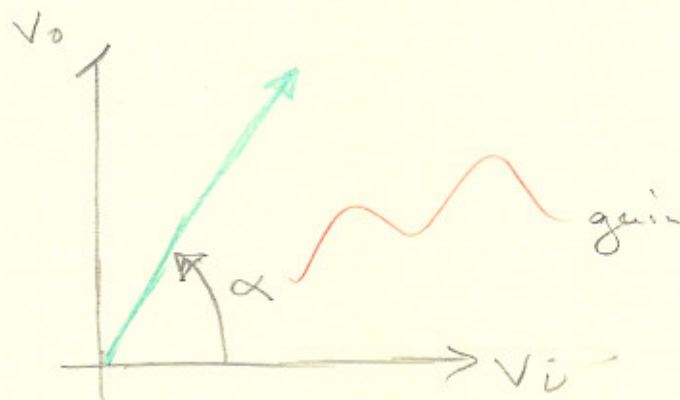
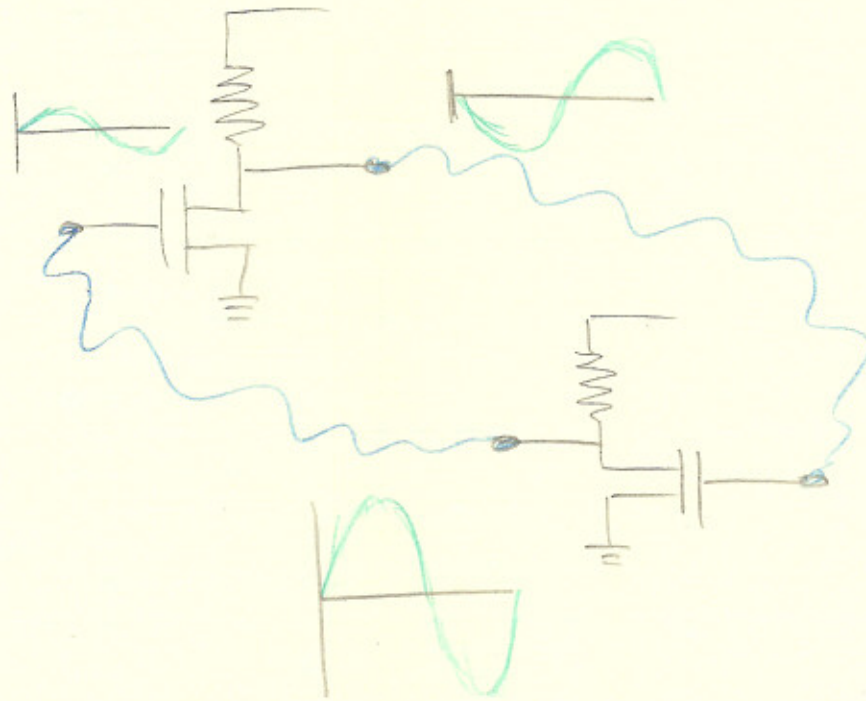


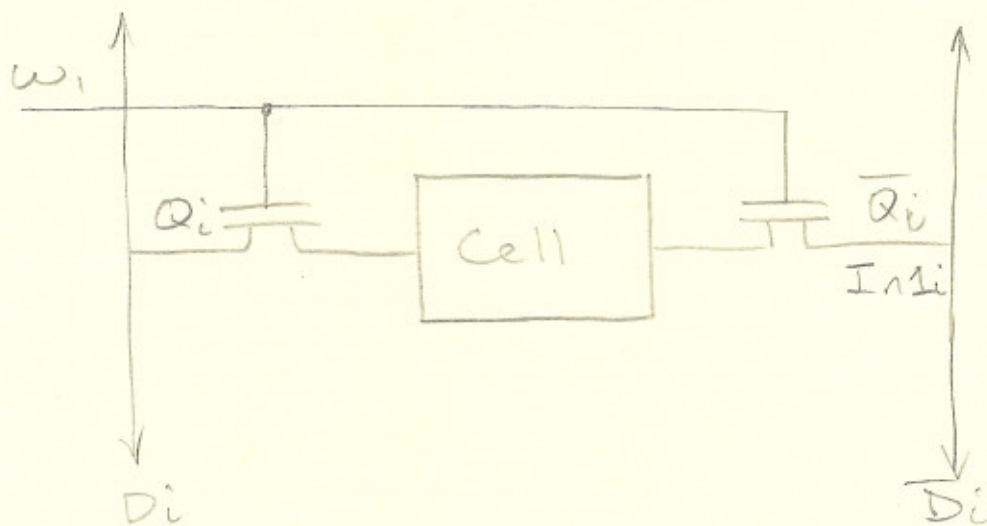
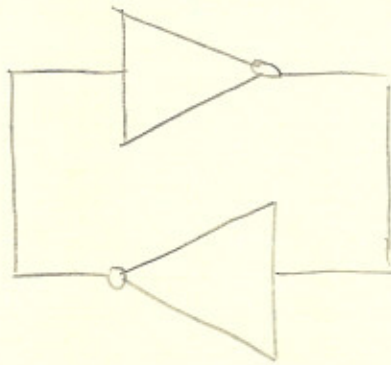
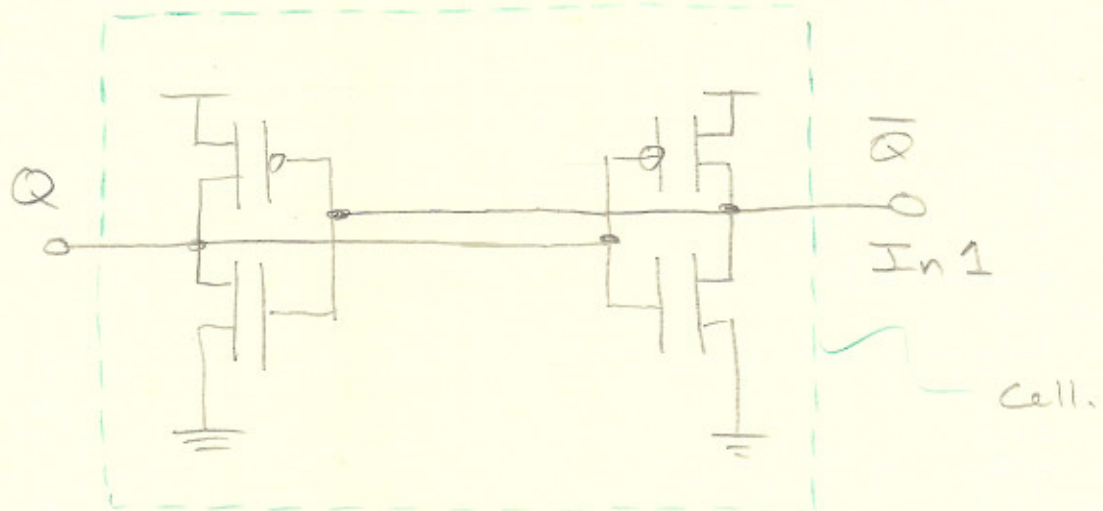
MemoriesStatic RAM

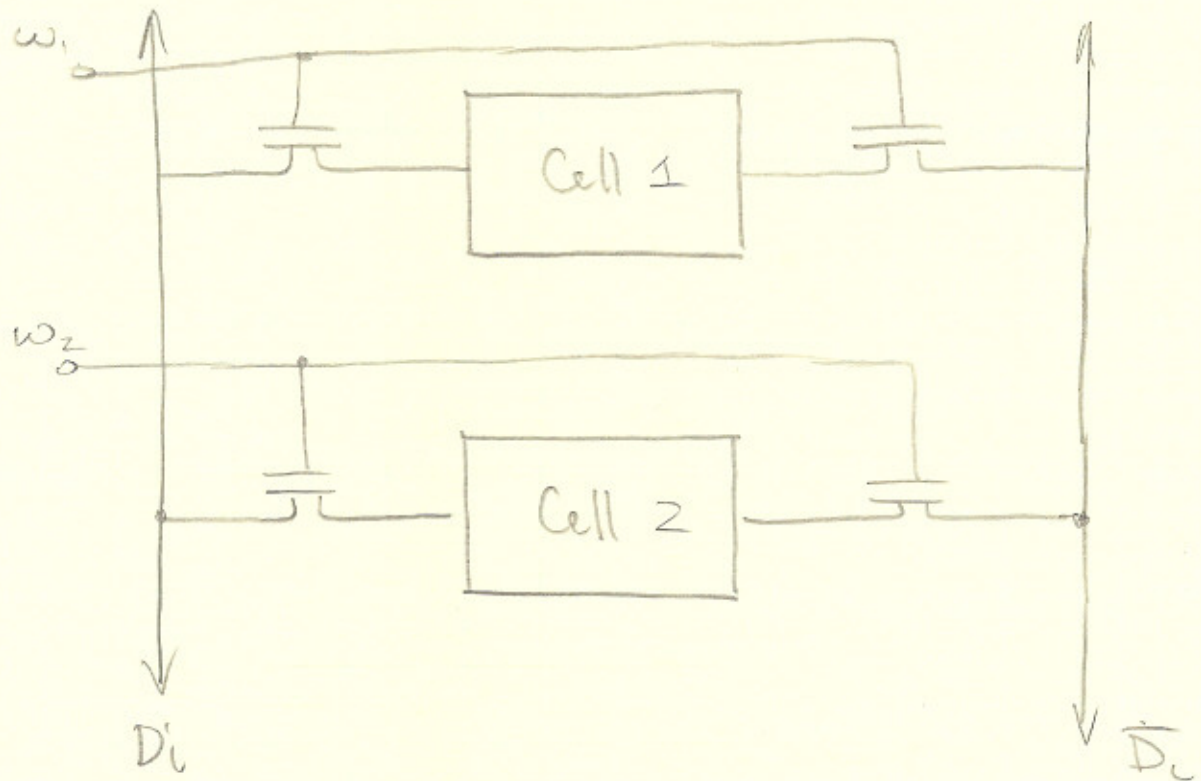
The circuit has positive feedback

The circuit will continue to feedback until it reaches V_{cc} . Hence if we place a high on the input, it will remain high.

If the circuit at start up has noise, this noise will force on of the inputs high and the other and the other side low.

CMOS technology gives us the circuit.





By making either w_1 or w_2 high and the other one low we can receive only one value from one cell.